



KC Ski Club's Wine Lovers trip to Hermann, MO
Friday, September 23rd through Sunday, September 25th
\$196 per person due at sign-up



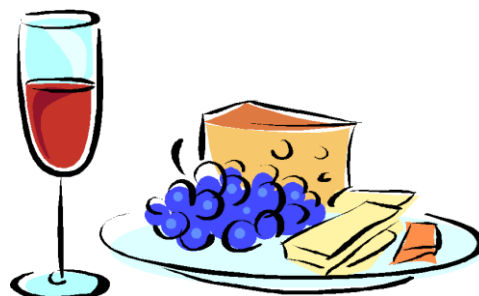
Location: The Bittersweet Inn and Stone House in Hermann, Missouri

1. Arrive Friday afternoon/evening in time for wine and cheese captain's party at the Bittersweet Inn
2. Wine Tasting Saturday:
 - Wineries are within walking distance and the local shuttle is also available
 - For the adventurous there is ziplining nearby (Call [314-326-0140](tel:314-326-0140))
3. Saturday night meet at 1837 for music and dinner on your own
4. Sunday return on your own schedule

\$196 Includes:

- Two nights lodging (Shared Bed)
- Friday night shared cheese and wine
- Saturday wine tasting tour

Bring: Food for breakfast if you prefer to cook.
Otherwise, there are plenty of restaurants within walking distance from the lodging.



Trip Captain:

Silvia Kofler

816-405-4178

koflersilvia3@gmail.com



KANSAS CITY SKI CLUB

Est.
1955

Membership in the Kansas City Ski Club (or an FSA Club) is required.

It is the responsibility of each participant to make payments on time. No refunds. Price is subject to change.